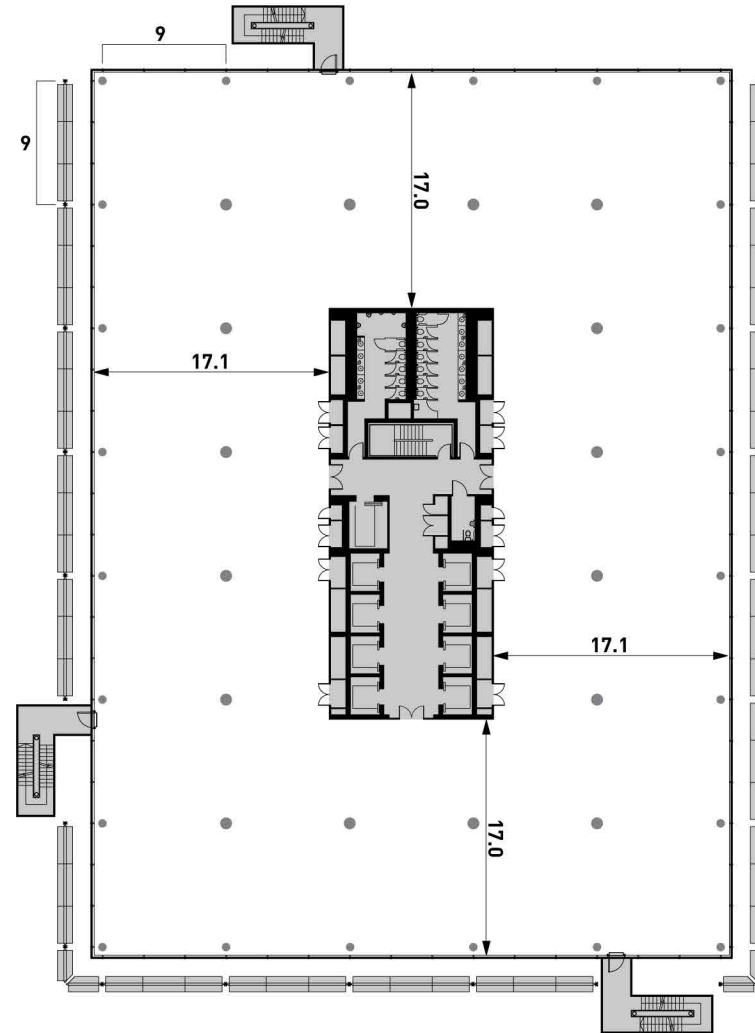
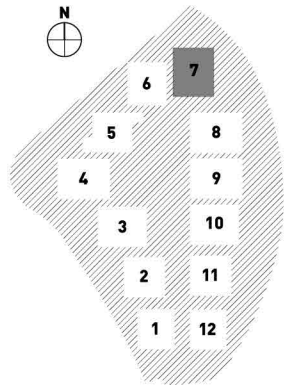


## AVAILABILITY

# BUILDING 7

### Schedule of Areas

| FLOOR        | SQ FT          | SQ M          |
|--------------|----------------|---------------|
| 11th Floor   | 28,120         | 2,612         |
| 10th Floor   | 28,120         | 2,612         |
| 9th Floor    | 28,095         | 2,610         |
| 8th Floor    | 28,095         | 2,610         |
| 7th Floor    | 28,095         | 2,610         |
| 6th Floor    | 28,060         | 2,607         |
| 5th Floor    | 28,060         | 2,607         |
| 4th Floor    | 28,060         | 2,607         |
| 3rd Floor    | 28,060         | 2,607         |
| 2nd Floor    | 28,040         | 2,605         |
| 1st Floor    | 25,375         | 2,357         |
| Grd Floor    | 24,370         | 2,264         |
| <b>Total</b> | <b>333,720</b> | <b>31,003</b> |
| Storage      | 340            | 31            |



For further information please contact:



**JON GARDINER**  
T: 020 7409 8828  
E: jgardiner@savills.com

**OLIVIA WOOD**  
T: 020 7409 8038  
E: owood@savills.com



**LUKE HACKING**  
T: 020 7182 2169  
E: luke.hacking@cbre.com

**MARIANNE THOMAS**  
T: 020 7182 2070  
E: marianne.thomas@cbre.com



**JOHNNY BRAY**  
T: 020 3328 9098  
E: johnny.bray@dtre.eu

**ALEX LOWDELL**  
T: 020 3328 9099  
E: alex.lowdell@dtre.eu